



GMB LONDON REGION

www.gmb-asda.com/support

GMB YOUR VOICE IN ASDA

JANUARY 2023

ASDA STORES - UNSAFE FOR EVERYONE?

Dear members,

These photos, and many others like them, have been provided to GMB London Region by our members working in ASDA Stores in our region, while their store was open to customers. The photos we have seen show that members of the public and colleagues working in-store are at constant risk of injury from trips, falls, and even serious cuts from discarded broken glass.

One such member had been reporting the safety issues in the shop to management for months, but had been repeatedly ignored, even to the point that the management were even refusing to hear formal grievances over the dire conditions.

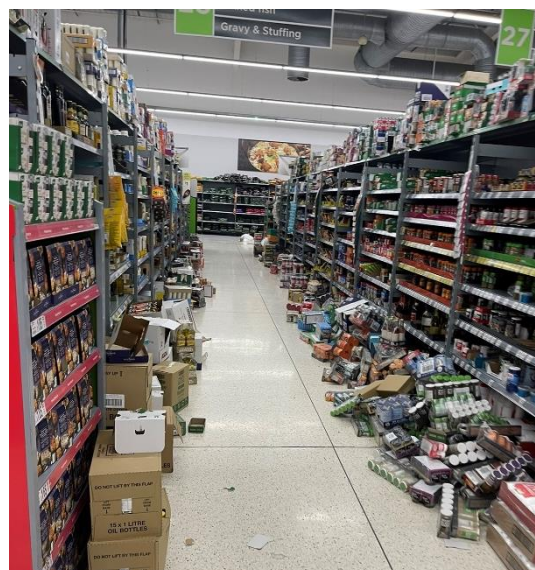
GMB London Region were forced to escalate concerns to senior ASDA management, but after 3 weeks it looks as though there is still no improvement shown at the shop in question.

With that in mind, we need to ask you:

Have you been injured at an ASDA store?

You may be entitled to personal injury compensation due to the incompetence and total negligence over health and safety demonstrated by this company!

If you're a GMB member, please contact UNIONLINE on 0300 333 0303 so you can discuss your personal injury claim!



If you are impacted by this issue and would like assistance, or you are seeking support or advice on other matters, please contact our office directly at 01603 626492, or visit our GMB Members' Support Centre at www.gmb-asda.com/support

GMB ASDA London Region

For assistance visit the GMB Members Support Centre
www.gmb-asda.com/support